



# Meet & Greet Agenda

- RESNA International SIG Overview
- ISWP Overview
- Open session

# Rehabilitation Engineering & Assistive Technology Society of North America



**RESNA**, the Rehabilitation Engineering and Assistive Technology Society of North America, is the premier professional organization dedicated to promoting the health and well-being of people with disabilities through increasing access to technology solutions.

Our members are clinicians, rehabilitation engineers, researchers, manufacturers, suppliers, developers, and educators.

# What RESNA Offers

- Certification as an Assistive Technology Professional (ATP)
- Certification as a Seating & Mobility Specialist (ATP/SMS)
- Annual Conference
- *Assistive Technology*, a scientific journal
- Student Assistive Technology Design Competition
- Student Scientific Paper Competition
- Webinars and courses in assistive technology
- Assistive Technology Standards development
- Member forums for information exchange and networking
- Position papers and other publications
- Free resources and information for the public

- RESNA has a “core membership” of about 900.
- The “core member” is dedicated to AT and has joined at least one SIG.
- Members are mostly East Coast USA (about half).

# Professional Specialty Groups



275 Rehab Engrs 34%

221 OTs & PTs 27%

197 Suppliers/Mfrs 24%

75 Educators 9%

35 Speech-Lang 4%

# Membership Benefits

- **Special Interest Groups:** RESNA's Special Interest Groups (SIGs) connect assistive technology professionals from diverse backgrounds to other members that share similar interests. Each SIG has its own communications forum, where members can pose questions, get immediate feedback, and collaborate.
- **Professional Specialty Groups:** RESNA's Professional Specialty Groups (PSGs) connect assistive technology professionals from different specialty areas to colleagues that have similar professional backgrounds. Many AT pros work in professional settings where they may be the only rehabilitation engineer, the only physical therapist, the only speech language pathologist, etc., on the team. PSGs are an antidote to that professional isolation.
- Both the SIGs and PSGs publish **position papers**, collaborate on conference presentations, and participate in professional development activities. Each has its own communications forum reserved for high-level and confidential communication between members. Members can join as many PSGs and SIGs as they wish.

# Membership Benefits

## International SIG ( = the best SIG)

The International Special Interest Group (SIG) is a forum for RESNA members who are interested in networking, providing services, and conducting research relative to Assistive Technology outside of North America. We seek to both grow as individuals and contribute to our profession through the exchange of information and experience across borders. The International SIG encourages and facilitates collaboration on Assistive Technology projects worldwide.



# Position Papers

A RESNA Position Paper on Clinical Practice is an official statement by the organization that, based on the consensus of experts and evidence summarizes current research and best-practice trends in relevant areas of Assistive Technology.

## Approved RESNA Position Papers:

- [The Application of Pediatric Power](#)
- [The Application of Seat Elevating Devices](#)
- [The Application of Tilt, Recline, and Elevating Legrests for Wheelchairs](#) (NEW UPDATE)
- [The Application of Wheelchair Standing Devices](#) (NEW Update)
- [RESNA's Position on Wheelchairs used as Seats in Motor Vehicles](#)
- [The Application of Ultralight Manual Wheelchairs](#)
- [The Application of Wheelchairs, Seating Systems, and Secondary Supports for Positioning vs. Restraint](#)
- [RESNA Position Paper on the Use of Evacuation Chairs \(May 2015\)](#)

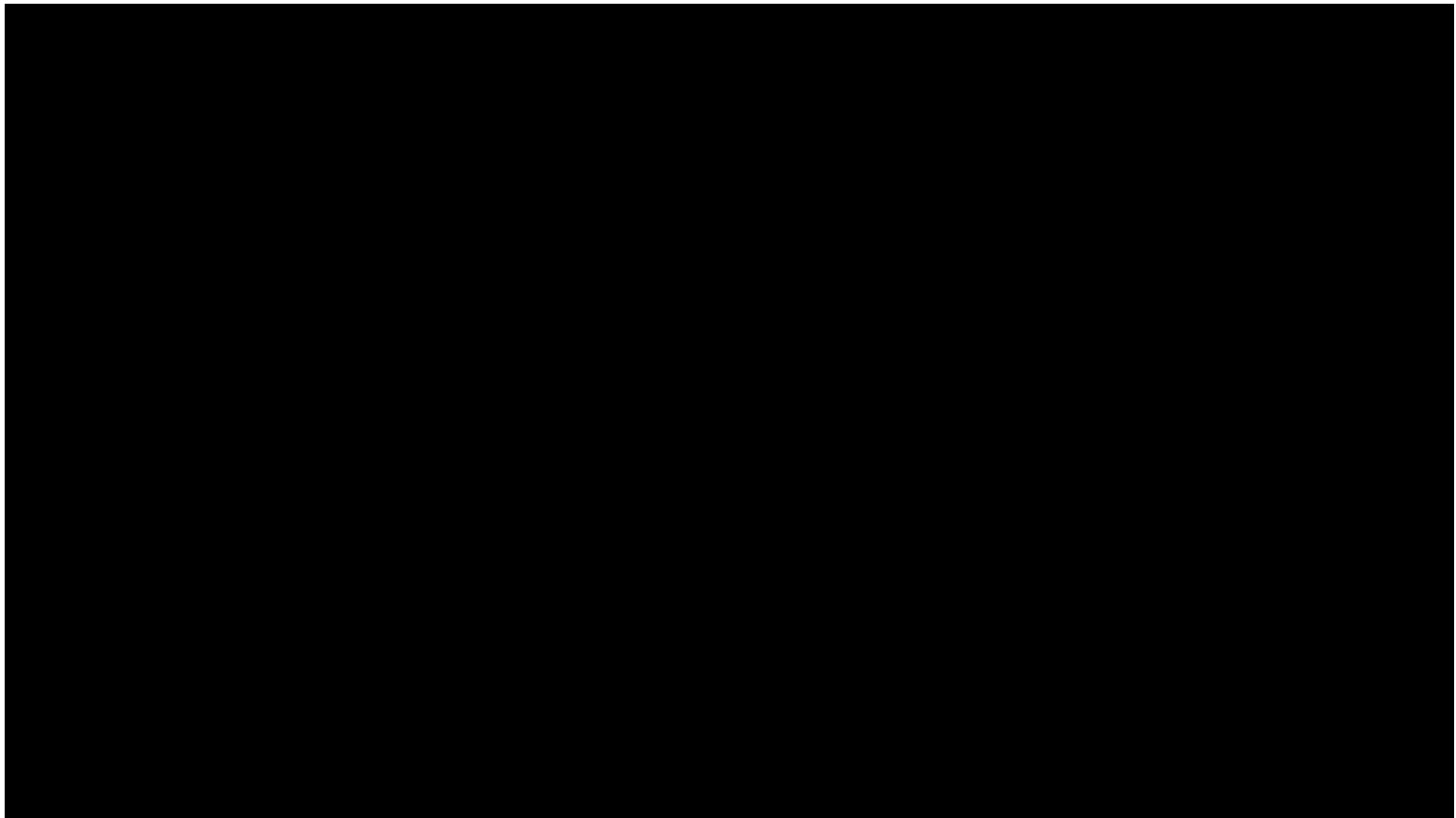
## Archived Position Papers

- [RESNA Position on the Application of Tilt, Recline and Elevating Legrests for Wheelchairs](#)(2010)
- [RESNA Position on the Application of Wheelchair Standing Devices](#) (2009)

# Certifications

RESNA offers two certifications to recognize assistive technology (AT) service providers who have met a national standard of job-based knowledge and experience. By promoting the professionalism of AT service providers, RESNA's certifications ultimately serve to protect consumers of AT solutions.

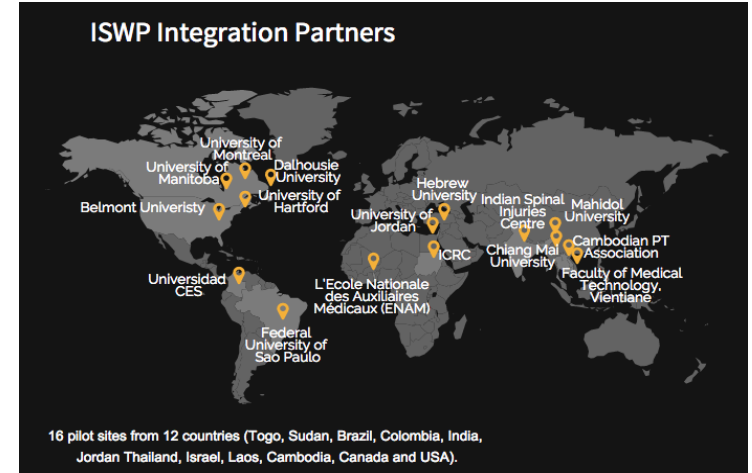
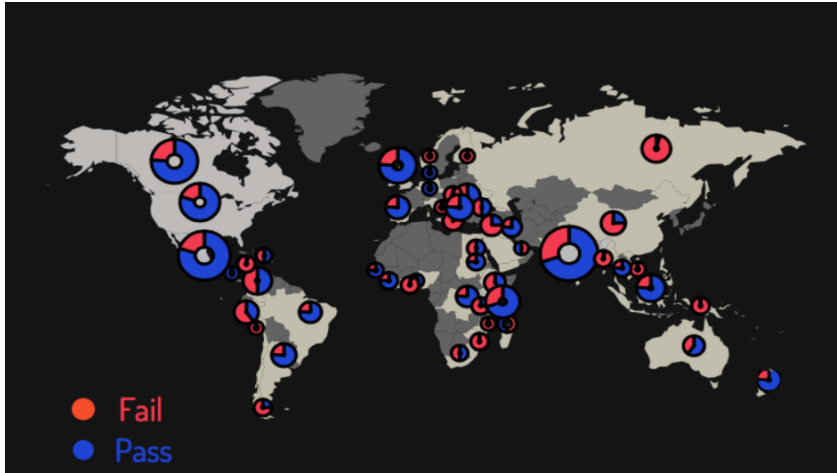




**Mission:** Serve as a global resource for wheelchair service standards and provision through advocacy, training/testing, standards, evidence-based practice, innovation and a platform for information exchange.



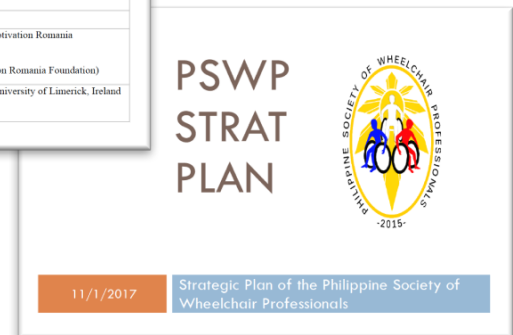
# Training



# Research

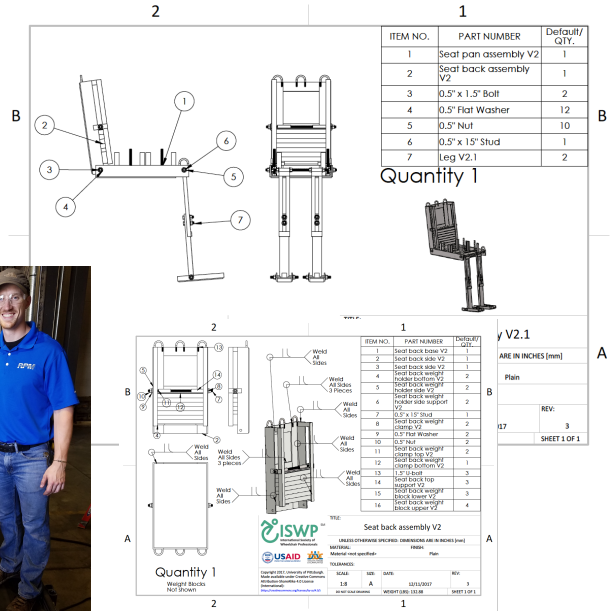


Archive of Data on Disability to  
Enable Policy and Research





# Products



# Last Slide

- ISWP materials are online & on jump-drive
- ISWP is currently recruiting mentors
- Sign-up sheet for RESNA & ISWP

